



ALWAYS read the installation and user care instructions before installing this product.



ALWAYS match the correct waste to the shower base.

ALWAYS have the waste installed by a trained and experienced skilled craftsman.



ALWAYS use an approved ABS waste fitting solvent adhesive.

ALWAYS wipe away excess adhesive.

ALWAYS attach Grid Removal Tool to a cord to prevent loss!

NEVER use the waste without the unit fully assembled.



ALWAYS Keep fingers clear of the gaps between the cover, and the locking ring during installation.



DO NOT place matches or cigarettes on or near this product.

The following plastic materials are used in this product:
Acrylonitrile Butadiene Styrene (ABS),
Nitrile Rubber



Ensure waste pipe end and both joint surfaces of the Universal elbow and TF75 are clean and grease free.

Apply a coating of adhesive to both surfaces of each joint and assemble immediately.

WIPE AWAY ALL EXCESS ADHESIVE.

This product carries a lifetime warranty against manufacturing and material defects conditional on the one-time correct installation of the product. Warranty excludes debris & blockages and improper installation. Your statutory rights are not affected.

The measurements throughout these installation and user care instructions have been converted from metric to its equivalent in imperial, therefore all dimensions are approximate and subject to manufacturing tolerances. Level Best does not make any warranty, expressed or implied, or accept any liability in connection with this information or its use. This information is furnished upon the condition that the person receiving it shall make his/her own tests to determine the suitability thereof for his/her particular purpose.

For further details on this and other Level Best products please contact your distributor - see details on outer packaging



TF75 Gravity Waste with Adjustable Height Stainless Steel cover

Installation and user care instructions

75mm water seal trapped waste for wet floors
Universal solvent socket joint for vertical or horizontal outlets.



Colour: White RAL9016

Internal Building use only

Trap WRcNSF tested to BS EN 274-2:2002 Patent GB2402946 & others Pending
EU registered Designs 000189105-0001, 000566849-001

Installer: Please ensure that this information is left with the end user of this product.

Installation Instructions

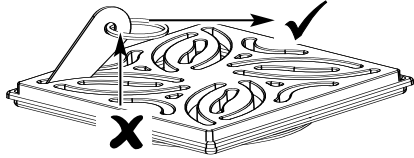
Before installation, ensure the former and waste are correctly supported from below and check the wet floor area slopes correctly towards the waste and the waste outlet pipe slopes down and away from the waste position by approximately 25mm per metre run (1 in 40).

Fitting the waste into the former

To remove the central Stainless Steel grid (A) insert the grid removal tool into one of the corner slots.

Then gently lever the grid up and out. Do not try to pull the grid out vertically.

Unscrew the grid frame threaded adjustment ring (B) – put these to one side.



Apply sealant to underside of outer rim and install into centre hole of Tuff Form Former.

Secure with 4 x CSK Head screws. Ensure the heads are flush and do not protrude or they may cut into the wet floor waste gasket seal.

Gluing outlet joint

Clean all dirt, moisture and grease from the pipe and fitting socket using a clean, dry cloth.

Check dry fit of the pipe in the fitting socket.

Apply a light coat of an approved ABS solvent cement to the inside of the fitting socket and to the outside of the pipe.

Insert into fitting socket, giving the pipe a one-quarter turn and making sure it goes all the way to the socket bottom.

Hold the joint together until a tight set is attained.

Check the cement bead around the joint, wipe excess cement from the pipe.

Do not move the system until the joints have cured (set) at least as long as recommended by the solvent cement.

Installing the sealed Flooring

Temporarily blank off waste centre hole to stop debris entering;

Apply wet floor tanking sealant to floor to overlap edge of waste 25mm(1 in), let this dry before continuing;

Depending upon the thickness of the floor tiles to be used, change the threaded adjustment ring (B) (small = 6-16mm (1/4"-5/8" in)/ large = 16-25mm (5/8"-1 in). This part is a push fit but may require some leverage to remove.

Insert centre waste grid fitting carefully and screw down (1) until height is level with intended finished floor.

Move sliding locking clip towards centre of waste to lock height adjustment; (2)

Rotate centre grid to line up with tile edges (this is sometimes a tight / stiff action) (3)

IMPORTANT: Tiling cement must be carefully packed around and below the centre grid support to ensure a long and trouble free life to the product and water-proof seal to the flooring is maintained. (4)

Finishing the waste installation

Clean up inside the waste grid area of tile grout and cement – DO NOT place this in the waste!

REMOVE TEMPORARY WASTE BLANKING MATERIALS, clean any grout and cement or other rubbish from the waste; lift out the trap bucket and empty it.

Make sure the pocket in the trap below the waste pipe outlet is clean and free from all grit or other waste material. Replace the trap bucket assembly by simply lowering it into the D shaped recess within the trap body. Make sure that it sits below the lip in the waste below the threaded ring. The seal must not be twisted or distorted.

Re-fit the stainless steel grid. It should sit level with the edge of the frame and the finished floor surface.

User Care Instructions

The TF75 is designed for low maintenance and reliable operation.

As part of a regular maintenance programme check and clean the waste trap bucket of accumulated hair or other waste material.

To remove and clean the bucket, first remove the steel grid using the tool provided and lift trap bucket out by gripping the pinch-point.

To separate the bucket and trap, press the centre of the "D" with your thumb - the two parts will 'pop' apart. Do not disturb the seal.

Clean these parts using warm soapy water. Also flush and wash down the inner body of the trap in the floor using warm soapy water or normal domestic bathroom cleaning materials.

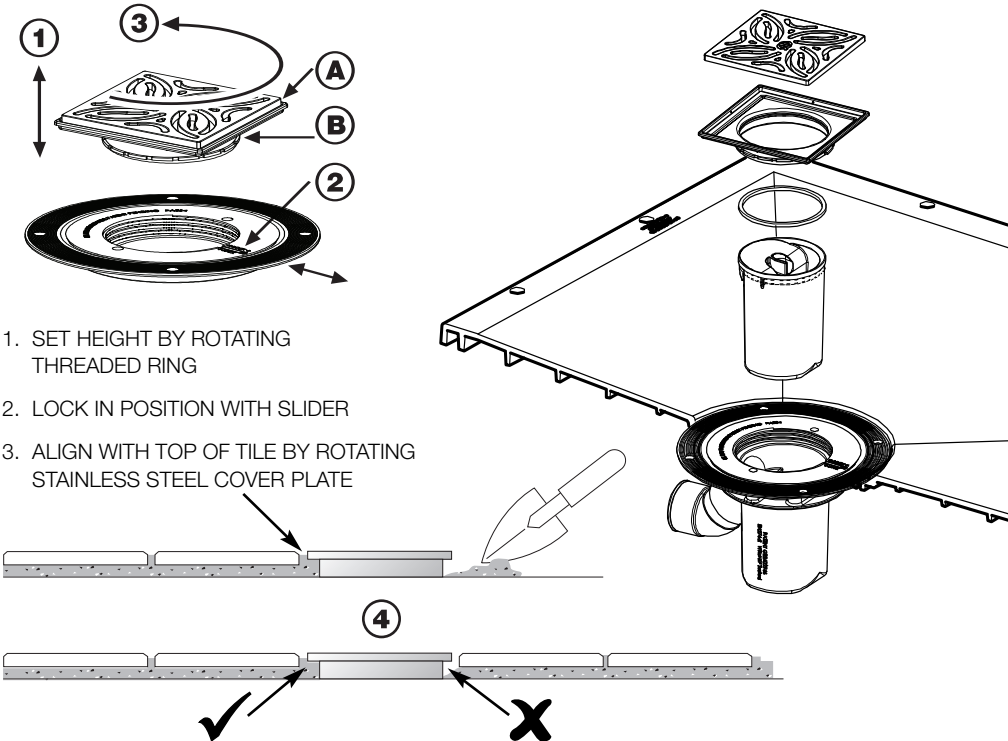
Do not use strong or concentrated acidic or alkaline cleaning materials as these may discolour or otherwise damage the product.

Level Best do not approve or recommend autoclave cleaning of any of the components due to the damage this can cause to the special engineering plastics used in the construction of this product. Flush clear of all residues using clean water. To reassemble the trap tube and bucket, slide the bucket onto the tube until it clips into place. Slide the trap with seal into the floor and fit the steel grid.

Packaging

This waste is supplied in a plastic bag to keep the product unsoiled until installation; it may also be packed in a cardboard box. Both are suitable for recycling operations and should be disposed of in accordance with local recycling regulations.

Sectioned floor view of TF75 Gravity Waste with Stainless Steel Cover.



1. SET HEIGHT BY ROTATING THREADED RING
2. LOCK IN POSITION WITH SLIDER
3. ALIGN WITH TOP OF TILE BY ROTATING STAINLESS STEEL COVER PLATE